

# OVERVIEW:

## Port of Seattle

### Duwamish River

### Peoples Park

#### North Site (former T-117)

- Public gathering area, seating, entrance to shoreline pathways + viewpoints
- Public art + interpretive features
- Pathway and bridge to 275 feet long public pier + viewpoints
- Interpretive trail to 0.5 acre restored marsh and riparian area
- Marsh platform + stepping-stone pathway
- Hand-carried boat launch



1

## Entrance

The entrance to the Terminal 117 site is located on Dallas Avenue South at the bend in the road among residences and industry, as pictured at right. This access point at the northeast edge of the site will operate as an intake area, welcoming busses, pedestrians and cyclists.

Features at this location anticipate the transition to the natural environment along the edge of the river. A standing sculpture at the entry garden will act as a beacon to draw visitors down the street. A welcoming interpretive panel will greet and orient visitors to the site, with bicycle racks to offer an incentive to use connecting trails and non-motorized modes of transportation.

1a

Entrance Interpretation

1b

Standing Sculpture

1c

Bicycle Racks



# OVERVIEW:

## Duwamish River Peoples Park

### South Site (Site 25)

- 5.5 acres of restored marsh and native riparian shoreline
- 9 treaty fishing anchor piles installed along the shoreline



# MAJOR MILESTONES:

## Duwamish River Peoples Park

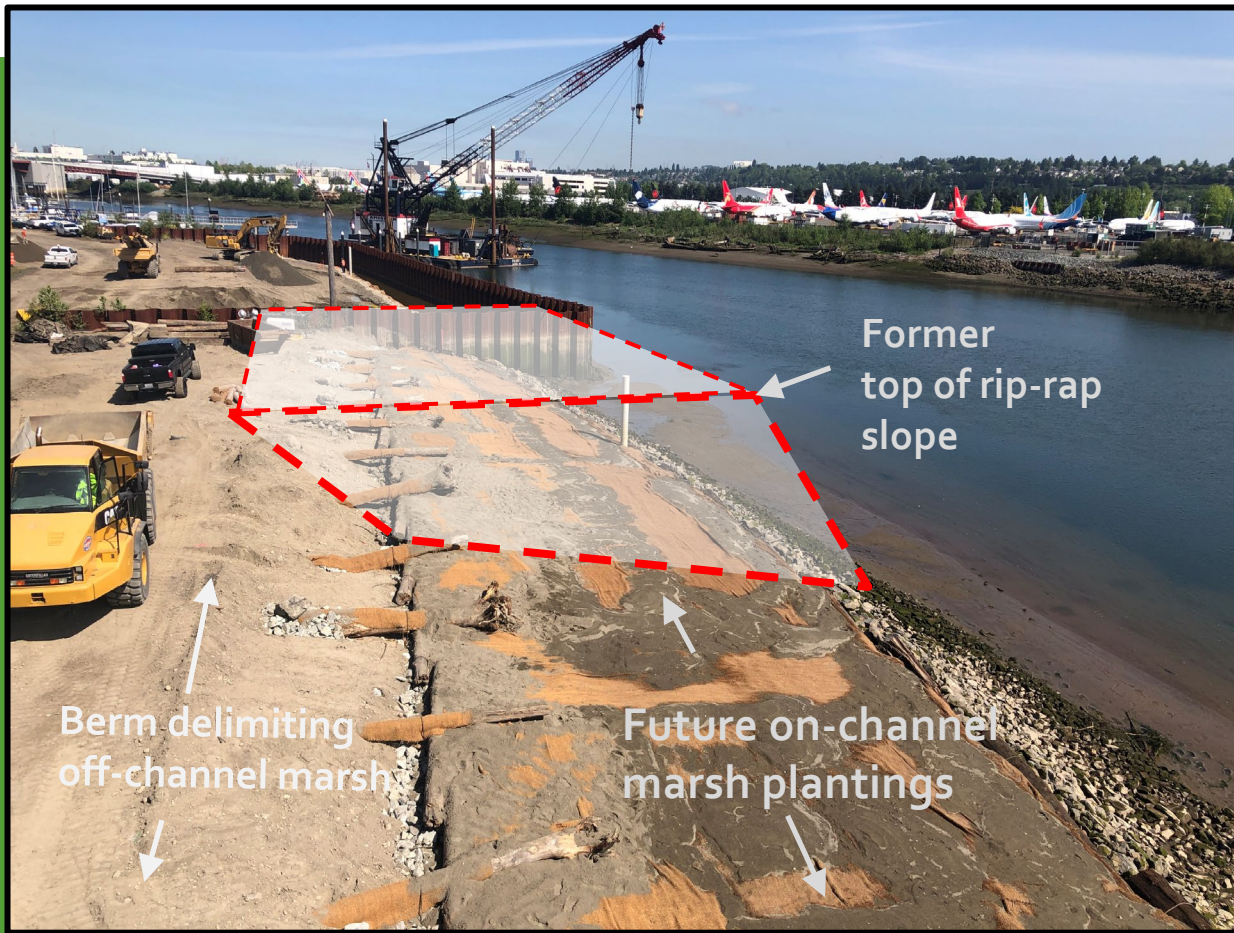
### **March-April:**

South Site: Install Riparian Fabric and Plantings

North Site: Install Concrete Bridge Abutment, Public Access Pier Framing, Gangways and Observation Tower

### **May-July:**

North Site: Excavation and Grading; Install Logs and Marsh Fabric



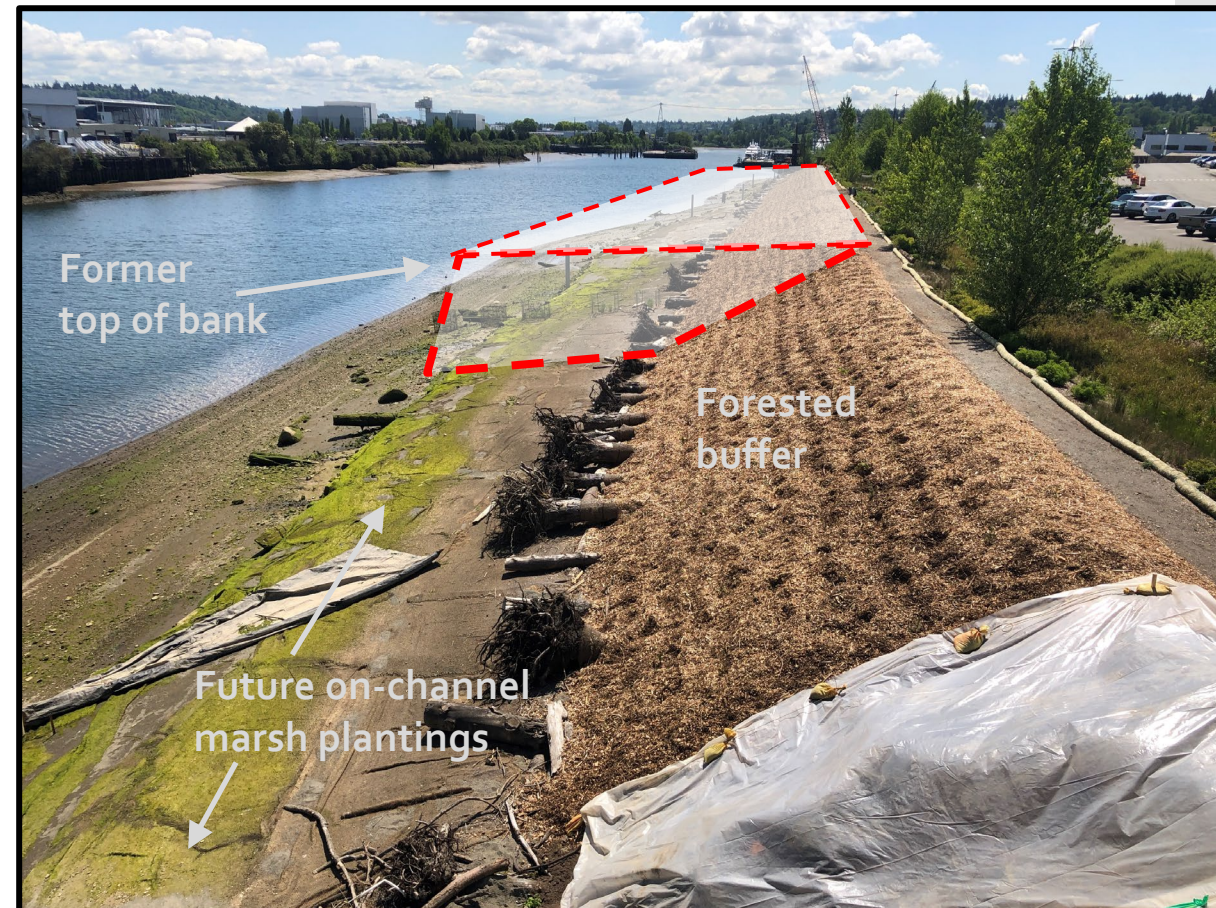
Former top of rip-rap slope

Berm delimiting off-channel marsh

Future on-channel marsh plantings

*Looking north from elevated viewpoint (April 30)*

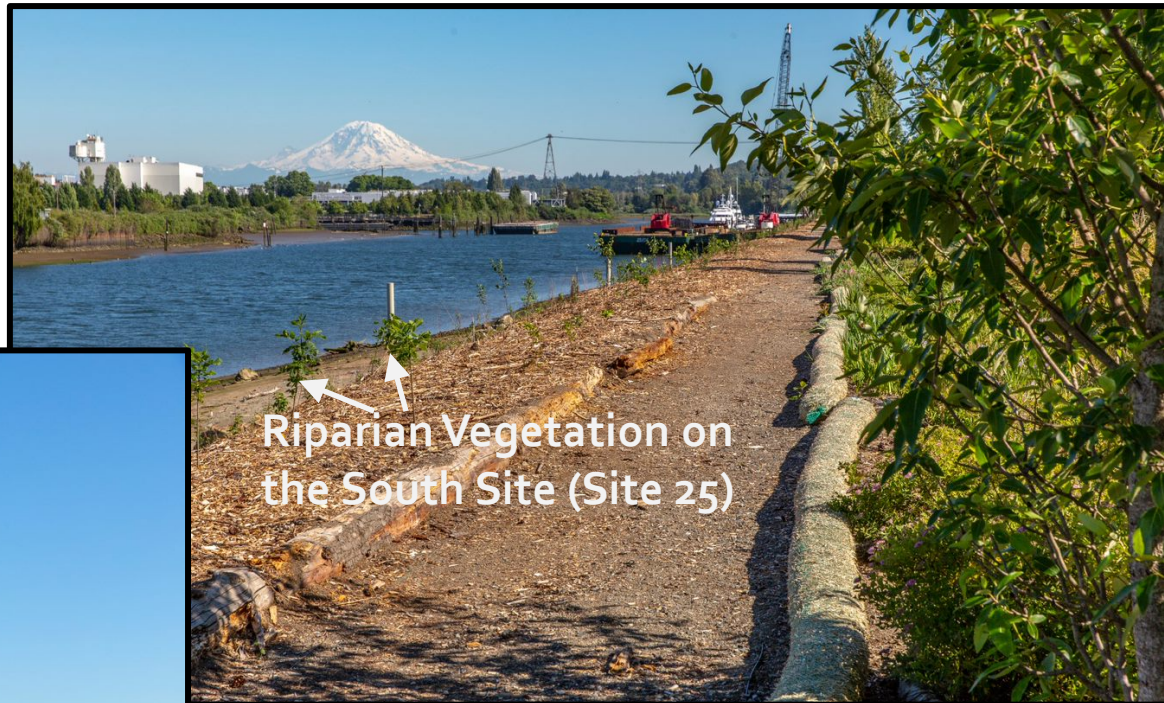
*Looking south from elevated viewpoint (April 30)*



Former top of bank

Forested buffer

Future on-channel marsh plantings





North Site (Site 23) –  
May 2021



North Site (Site 23) –  
June 2021



Platform and Gangway –  
Complete!  
May 2021



Public Access Pier – Complete!  
June 2021



## UPCOMING WORK:

### Duwamish River Peoples Park

#### **July-August:**

Install Rock Steps, Boat Launch, Bridge, and Sidewalks

#### **August:**

Install Rockery, Platform, Sitting Wall, Fence, and Electrical Infrastructure

#### **September:**

Install Public Art Features, Bike Rack, Water Fountain